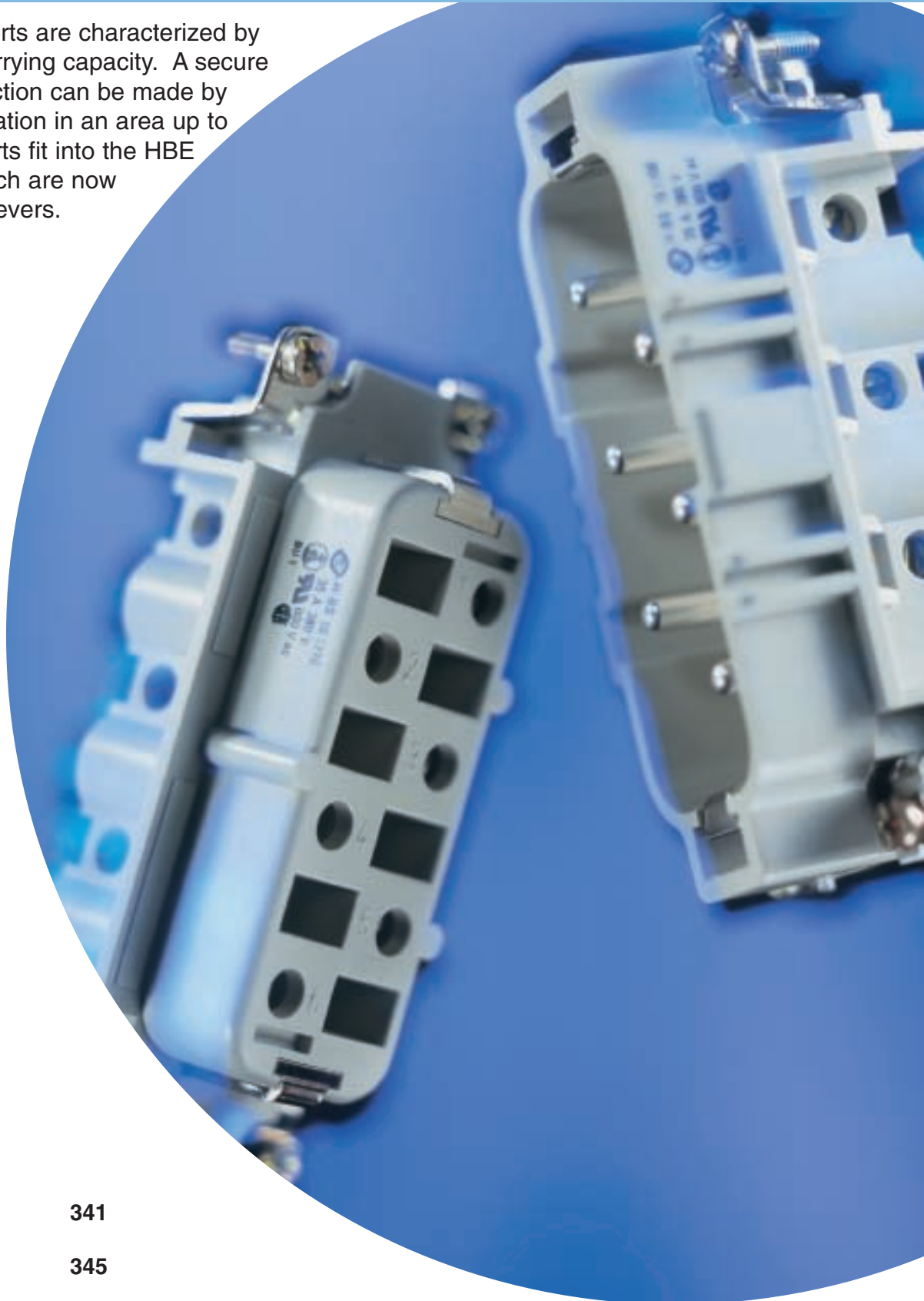


EPIC[®] CONNECTORS

HBS Series



The HBS series inserts are characterized by their high current carrying capacity. A secure and resistant connection can be made by simple screw termination in an area up to 6 mm². These inserts fit into the HBE Series housings which are now standard with fixed levers.



HBS 6 Series	341
HBS 12 Series	345

EPIC® CONNECTORS

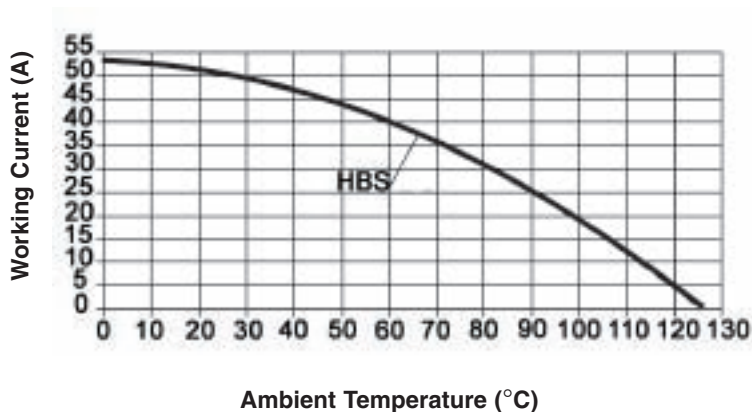
HBS Inserts Technical Data

TECHNICAL DATA

Number of Contacts:	6, 12 (+PE)	Pollution Level:	3
Rated Voltage:	VDE: 400V EPIC HBS 6 - 12 UL: 600V EPIC HBS 6 - 12 CSA: 600V EPIC HBS 6 - 12	Test Voltage:	6 kV
Rated Current:	VDE: 35A EPIC HBS 6 - 12 UL: 35A EPIC HBS 6 - 12 CSA: 35A EPIC HBS 6 - 12	Termination Type:	Screw termination: 0.5 - 6 mm ² AWG: 20 - 10
		Temperature Range:	-40°C to 125°C
		Contacts:	Copper alloy, silver plated
		Contact Resistance:	<2mOhm
		Mating Cycles:	100 (higher mating cycles depends on the application)

HBS INSERTS: DERATING CURVES

HBS: 6.0 mm² (10 AWG)



MATING COMPONENTS

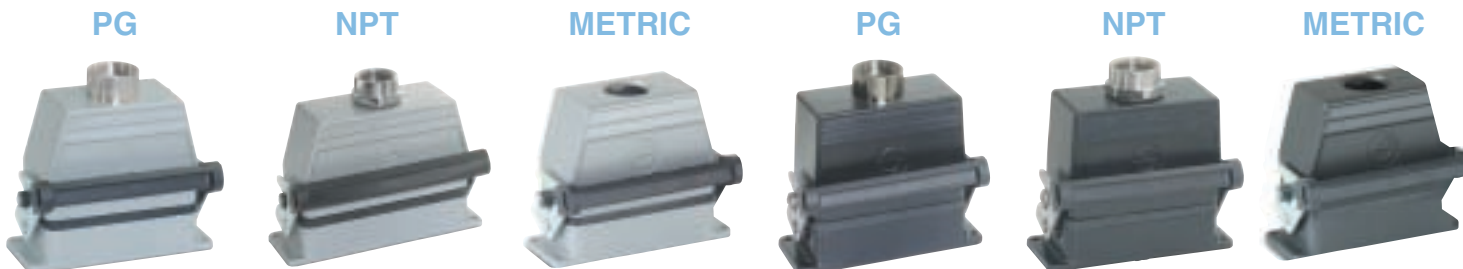
HBS Plugs & Receptacles fit into EPIC® HBE Housings. A quick reference for the mating components is shown. Diagrams are located in the HBE Section of the catalog. Please note that metric parts are available.

Specifications: DIN 43652
Temperature Range: -40°C to +125°C

Protection class: IP65
Material: Aluminum alloy, powder coated

Standard Grey Coating (NEMA 4)

EP Black Coating (NEMA 4X)

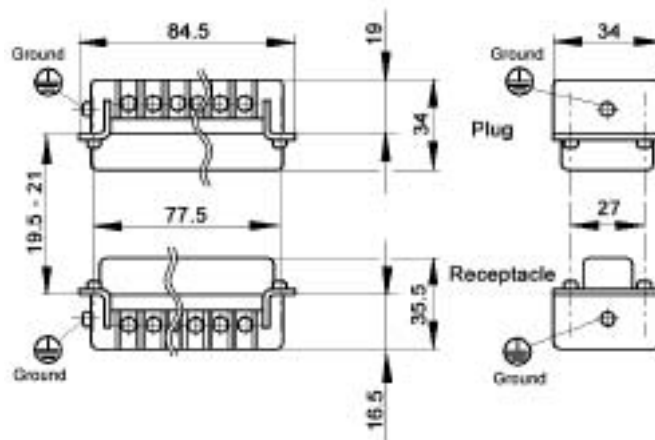
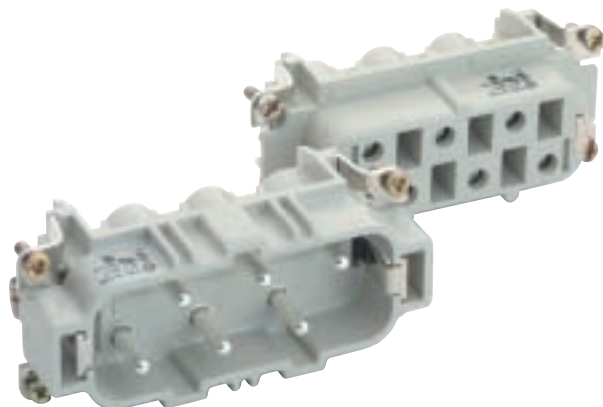


EPIC® CONNECTORS

HBS 6 Plugs & Receptacles

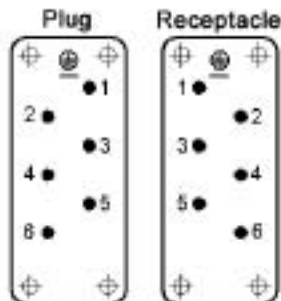


SCREW TERMINATED INSERTS

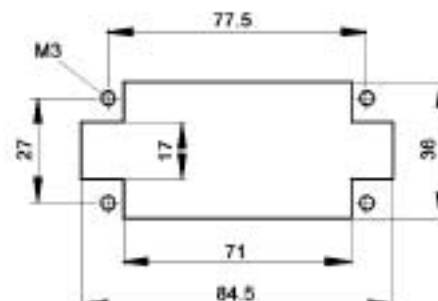


All dimensions are in mm.

View from cable side



Panel Cut-Out
(Insert Only)



	Plug	Receptacle
Screw Termination with wire protection	10.1700	10.1710

MATING COMPONENTS

HBS 6 Plugs & Receptacles fit into EPIC® HBE 16 Housings. A quick reference for the mating components is shown. Diagrams are located in the HBE Section of the catalog (Page 293). Please note that metric parts are available.

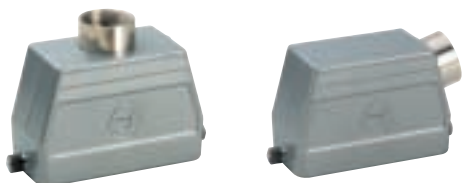
EPIC® CONNECTORS

HBE 16 Housings: Single Lever on Base for HBS 6 Inserts



HOODS

STANDARD PROFILE

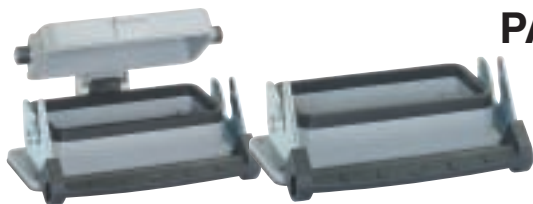


Position of Cable Entry	Size of Entry		Standard Grey Coating		Black Coating (EP)	
	PG	NPT	PG Part #	NPT Part #	PG Part #	NPT Part #
Top Entry	21	3/4"	10.0809	10.0809 NP	70.0990	70.0990 NP
	29	1"	10.0909	10.0909 NP	-	-
Side Entry	21	3/4"	10.0829	10.0829 NP	70.1090	70.1090 NP
	29	1"	10.0929	10.0929 NP	-	-

HIGH PROFILE



Position of Cable Entry	Size of Entry		Standard Grey Coating		Black Coating (EP)	
	PG	NPT	PG Part #	NPT Part #	PG Part #	NPT Part #
Top Entry	21	3/4"	70.0942	70.0942 NP	70.0992	70.0992 NP
	29	1"	70.0944	70.0944 NP	70.0994	70.0994 NP
Side Entry	21	3/4"	70.1042	70.1042 NP	70.1092	70.1092 NP
	29	1"	70.1044	70.1044 NP	70.1094	70.1094 NP

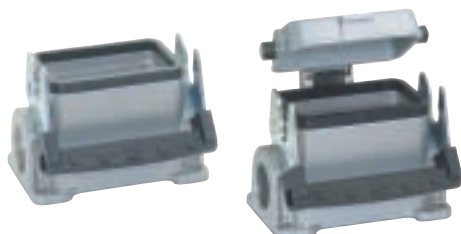


PANEL MOUNT BASES

Description	Standard Grey Coating	Black Coating (EP)
Without Dust Cover	10.0729	70.0827
With Dust Cover	10.0739	70.0837

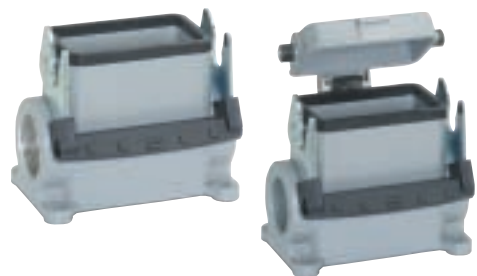
SURFACE MOUNT BASES

STANDARD PROFILE



# of Entries	Size of Entry		Standard Grey Coating		Black Coating (EP)	
	PG	NPT	PG Part #	NPT Part #	PG Part #	NPT Part #
2 Entries	21	3/4"	10.0759	10.0759 NP	70.1130	70.1130 NP
1 Entry	21	3/4"	10.0749	10.0749 NP	70.1120	70.1120 NP
2 Entries with dust cover	21	3/4"	10.0789	10.0789 NP	70.1170	70.1170 NP
1 Entry with dust cover	21	3/4"	10.0769	10.0769 NP	70.1160	70.1160 NP

HIGH PROFILE



# of Entries	Size of Entry		Standard Grey Coating		Black Coating (EP)	
	PG	NPT	PG Part #	NPT Part #	PG Part #	NPT Part #
2 Entries	21	3/4"	70.1112	70.1112 NP	70.1132	70.1132 NP
	29	1"	70.1114	70.1114 NP	70.1134	70.1134 NP
1 Entry	21	3/4"	70.1102	70.1102 NP	70.1122	70.1122 NP
	29	1"	70.1104	70.1104 NP	70.1124	70.1124 NP
2 Entries with dust cover	21	3/4"	70.1152	70.1152 NP	70.1172	70.1172 NP
	29	1"	70.1154	70.1154 NP	70.1174	70.1174 NP
1 Entry with dust cover	21	3/4"	70.1142	70.1142 NP	70.1162	70.1162 NP
	29	1"	70.1144	70.1144 NP	70.1164	70.1164 NP



CABLE COUPLER HOODS

Profile	Size of Entry		Standard Grey Coating		Black Coating (EP)	
	PG	NPT	PG Part #	NPT Part #	PG Part #	NPT Part #
Standard Profile	21	3/4"	10.0869	10.0869 NP	70.0930	70.0930 NP
	29	1"	10.0969	10.0969 NP	-	-
High Profile	21	3/4"	70.0922	70.0922 NP	70.0932	70.0932 NP
	29	1"	70.0924	70.0924 NP	70.0934	70.0934 NP

EPIC® CONNECTORS

HBE 16 Housings: Double Levers on Base for HBS 6 Inserts



HOODS



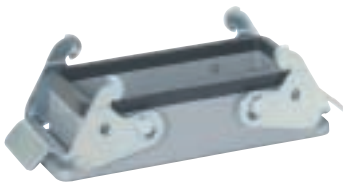
STANDARD PROFILE

Position of Cable Entry	Size of Entry		Standard Grey Coating		Black Coating (EP)	
	PG	NPT	PG Part #	NPT Part #	PG Part #	NPT Part #
Top Entry	21	3/4"	10.0800	10.0800 NP	70.1010	70.1010 NP
	29	1"	10.0900	10.0900 NP	-	-
Side Entry	21	3/4"	10.0820	10.0820 NP	70.1030	70.1030 NP
	29	1"	10.0920	10.0920 NP	-	-

HIGH PROFILE

Position of Cable Entry	Size of Entry		Standard Grey Coating		Black Coating (EP)	
	PG	NPT	PG Part #	NPT Part #	PG Part #	NPT Part #
Top Entry	21	3/4"	70.1002	70.1002 NP	70.1012	70.1012 NP
	29	1"	70.1004	70.1004 NP	70.1014	70.1014 NP
Side Entry	21	3/4"	70.1022	70.1022 NP	70.1032	70.1032 NP
	29	1"	70.1024	70.1024 NP	70.1034	70.1034 NP

PANEL MOUNT BASES



Description	Standard Grey Coating	Black Coating (EP)
Without Dust Cover	10.0720	70.0825

SURFACE MOUNT BASES



STANDARD PROFILE

# of Entries	Size of Entry		Standard Grey Coating		Black Coating (EP)	
	PG	NPT	PG Part #	NPT Part #	PG Part #	NPT Part #
2 Entries	21	3/4"	10.0750	10.0750 NP	70.0880	70.0880 NP
1 Entry	21	3/4"	10.0740	10.0740 NP	70.0870	70.0870 NP

HIGH PROFILE

# of Entries	Size of Entry		Standard Grey Coating		Black Coating (EP)	
	PG	NPT	PG Part #	NPT Part #	PG Part #	NPT Part #
2 Entries	21	3/4"	70.0862	70.0862 NP	70.0882	70.0882 NP
	29	1"	70.0864	70.0864 NP	70.0884	70.0884 NP
1 Entry	21	3/4"	70.0852	70.0852 NP	70.0872	70.0872 NP
	29	1"	70.0854	70.0854 NP	70.0874	70.0874 NP

CABLE COUPLER HOODS



Profile	Size of Entry		Standard Grey Coating		Black Coating (EP)	
	PG	NPT	PG Part #	NPT Part #	PG Part #	NPT Part #
Standard Profile	21	3/4"	10.0860	10.0860 NP	70.0910	70.0910 NP
	29	1"	10.0960	10.0960 NP	-	-
High Profile	21	3/4"	70.0902	70.0902 NP	70.0912	70.0912 NP
	29	1"	70.0904	70.0904 NP	70.0914	70.0914 NP

EPIC® CONNECTORS

HBE 16 Housings: Double Levers on Hood for HBS 6 Inserts



HOODS



STANDARD PROFILE

Position of Cable Entry	Size of Entry		Standard Grey Coating		Black Coating (EP)	
	PG	NPT	PG Part #	NPT Part #	PG Part #	NPT Part #
Top Entry	21	3/4"	10.0810	10.0810 NP	70.1060	70.1060 NP
	29	1"	10.0910	10.0910 NP	-	-
Side Entry	21	3/4"	10.0830	10.0830 NP	70.1080	70.1080 NP
	29	1"	10.0930	10.0930 NP	-	-

HIGH PROFILE

Position of Cable Entry	Size of Entry		Standard Grey Coating		Black Coating (EP)	
	PG	NPT	PG Part #	NPT Part #	PG Part #	NPT Part #
Top Entry	21	3/4"	70.1052	70.1052 NP	70.1062	70.1062 NP
	29	1"	70.1054	70.1054 NP	70.1064	70.1064 NP
Side Entry	21	3/4"	70.1072	70.1072 NP	70.1082	70.1032 NP
	29	1"	70.1074	70.1074 NP	70.1084	70.1034 NP

PANEL MOUNT BASES



Description	Standard Grey Coating	Black Coating (EP)
With Dust Cover	10.0730	70.0835
Without Dust Cover	10.0731	-

SURFACE MOUNT BASES



# of Entries	Size of Entry		Standard Grey Coating		Black Coating (EP)	
	PG	NPT	PG Part #	NPT Part #	PG Part #	NPT Part #
2 Entries	21	3/4"	70.0960	70.0960 NP	70.0980	70.0980 NP
1 Entry	21	3/4"	10.0760	10.0760 NP	70.0970	70.0970 NP
2 Entries with dust cover	21	3/4"	70.0962	70.0962 NP	70.0982	70.0982 NP
	29	1"	70.0964	70.0964 NP	70.0984	70.0984 NP
1 Entry with dust cover	21	3/4"	70.0952	70.0952 NP	70.0972	70.0972 NP
	29	1"	70.0954	70.0954 NP	70.0974	70.0974 NP

DUST COVERS WITH ATTACHMENT STRING

Material: Thermoplastic Resin

Temperature:

-40°C to 125°C



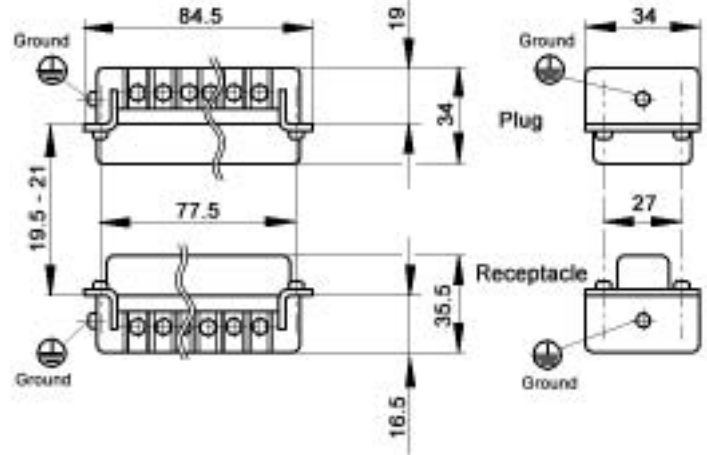
	Part #
Dust cover with single lever for HBE 16 Hoods	10.0886
Dust cover with single lever bolts for HBE 16 Panel Mount or Surface Mount Base/ Cable Coupler Hood	10.0887
Dust cover with double levers and gasket for HBE 16 Hoods	10.0885
Dust cover with double lever bolts for HBE 16 Panel Mount or Surface Mount Base/ Cable Coupler Hood	10.0870
Dust cover with double lever bolts and gasket for HBE 16 Hoods	10.0871

EPIC® CONNECTORS

HBS 12 Plugs & Receptacles

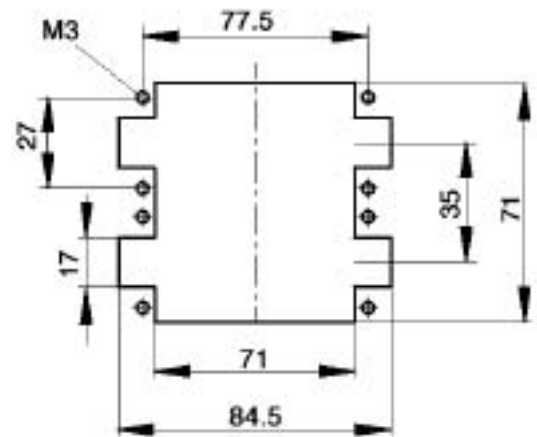
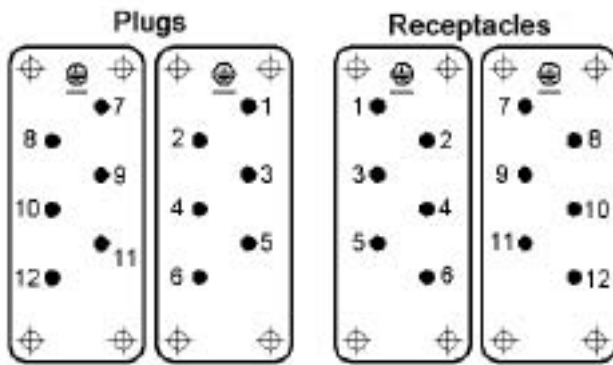


SCREW TERMINATED INSERTS



View from cable side

Panel Cut-Out
(Insert Only)



	Plug	Receptacle
Screw Termination with wire protection #1-6	10.1700	10.1710
Screw Termination with wire protection #7-12	10.1706	10.1716

MATING COMPONENTS

HBS 12 Plugs & Receptacles fit into EPIC® HBE 32 Housings. A quick reference for the mating components is shown. Diagrams are located in the HBE Section of the catalog (Page 313). Please note that metric parts are available.

EPIC® CONNECTORS

HBE 32 Housings for HBS 12 Inserts



DOUBLE LEVERS ON BASE



Position of Cable Entry	Size of Entry		Standard Grey Coating	
	PG	NPT	PG Part #	NPT Part #
Top Entry	21	3/4"	10.1330	10.1330 NP
	29	1"	10.1340	10.1340 NP
Side Entry	21	3/4"	10.1350	10.1350 NP
	29	1"	10.1360	10.1360 NP

Part #
10.1320



# of Entries	Size of Entry		Standard Grey Coating	
	PG	NPT	PG Part #	NPT Part #
2 Entries	29	1"	10.1380	10.1380 NP
1 Entry	29	1"	10.1370	10.1370 NP

Size of Entry		Standard Grey Coating	
PG	NPT	PG Part #	NPT Part #
21	3/4"	10.1390	10.1390
29	1"	10.1395	10.1395 NP

Dust cover with double lever bolts and attachment string for panel mount or surface mount base or cable coupler hood: 10.1420

DOUBLE LEVERS ON HOOD



Position of Cable Entry	Size of Entry		Standard Grey Coating	
	PG	NPT	PG Part #	NPT Part #
Top Entry	29	1"	70.2050	70.2050 NP
Side Entry	29	1"	10.1366	10.1366 NP

Part #
10.1323

Size of Entry		Standard Grey Coating	
PG	NPT	PG Part #	NPT Part #
29	1"	10.1373	10.1373 NP